

Clifton and Dexter Safety Concerns



Facing West 4-Way Stop
 Three Crosswalks
 Two Busy Bus Stops
 Heavily traveled by students
 (near Beebe), young children
 (nearby daycare), dogwalkers,
 cyclists, and pedestrians.

Drivers FREQUENTLY run
 stop signs (without slowing
 down) on Clifton Street as they
 continue straight heading in
 both directions. Less
 FREQUENT observations of
 running stop signs out of
 Dexter.

Accident History

After the [March 28, 2016 Mayor's Safety Awareness Meeting](#) at the Beebe, The Advocate reported: "One woman said she is almost hit once a week by drivers who plow past a stop sign on Clifton Street. Another resident said the early-morning driving school lessons on Dexter Street are a nightmare."

=====

<http://www.city-data.com/accidents/acc-Malden-Massachusetts.html>

September 30, 2010

Malden fatal car crashes and road traffic accidents list for 2010							
							Table of Contents ▾
Fatal accident count							4
Vehicles involved in fatal accidents							5
Fatal accidents involving drunken persons							3
Fatalities							4
Persons involved in fatal accidents							7
Pedestrians involved in fatal accidents							2

#	Date	Location	Vehicles	Drunken persons	Fatalities	Persons	Pedestrians
1	Jun 13, 2010 10:41 AM	Sr-99	1	1	1	1	-
2	Sep 30, 2010 04:55 PM	Dexter Street, Clifton Street	1	-	1	1	1
3	Nov 12, 2010 05:57 PM	Lynn Street, Davis Street	1	1	1	2	1
4	Aug 1, 2010 00:42 AM	Lebanon Street	2	1	1	3	-

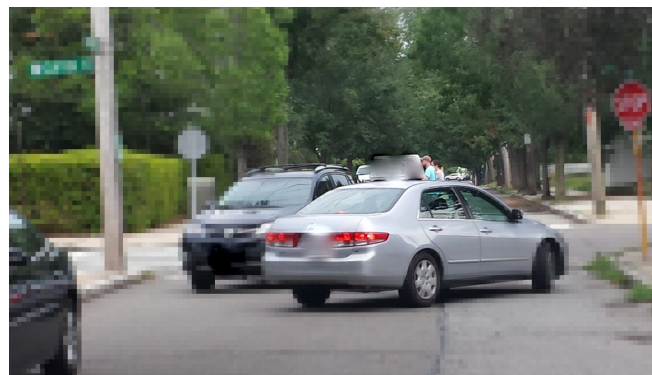


November 19, 2016 two-car accident

Vehicle accidents seem to occur when one vehicle is on Clifton and one vehicle is on Dexter and they mis-time entry into the shared roadway (possibly because one vehicle has stopped before proceeding and the other is expected to stop but does not.)

Teaching Others to Drive

Practicing 3 Point Turns at the Intersection of Dexter and Clifton on August 18, 2015 at 5:40 PM
Notice presence of other cars AND pedestrians crossing sidewalk with baby stroller.



Questions

1. Increased enforcement took place in the past (perhaps winter 2015/2016) during the evening rush hour commute - it seemed like that activity was very busy with many stops. Was that effective?
2. Are speed bumps, such as what is used at Waitt's Mount, effective? Affordable? Pros and cons?
3. Are driving schools licensed? Monitored? Is there a history of reports or complaints?

Speed bumps in use at Waitt's Mount - could these visible deterrents to speeding be installed along Clifton Street - in the vicinity of the Bus Stop Travel lane? (Clifton is also sometimes a high speed route for motorcycles - not sure what kind of "traction" these provide?)



Raised Crosswalk, Somerville, MA

Citizen Comments

(most are from different individuals, collected online or by word-of-mouth, and most were gathered since 11/19/16 two-car accident)

“Thank you Debbie DeMaria - our Counselor at Large - for carefully reading over our discussions on this important matter, and for letting us know the steps you are taking to get our concerns to the right people / departments. A mother of a young child just emailed me to thank all of us for bringing up this subject. She said her child likes to ride his bike on their sidewalk, while she watches, and people are continually speeding by in their cars. She is concerned about the safety of her child, and rightly so. Any assistance you can give us would be greatly appreciated; I realize your platter is already full. Thanks for responding so quickly!”

=====

“I started walking to work ... down Dexter last year and was shocked at how unsafe it felt at that intersection (also the [Dexter] and Maple St intersection). The cars coming down Clifton seldom see the pedestrian, often run through the stop sign as if it doesn't exist. I have felt that absolutely NO child (or anyone not completely aware of the area) would be safe trying to cross that intersection. It should definitely be addressed as top priority before another unnecessary tragedy occurs.”

=====

“I live on Dexter street ... [Dexter/Clifton] is horrible - I'm a senior citizen and I wish ... At the meeting tonight, you bring up the fact that we have about 10 driving schools ... most of them are not from Malden ... who practice here. It makes it impossible and unsafe for us to get out of our yards ... it has been going on for a number years and no one wants to do anything. Thank you.”

=====

“Totally agree - I have seen the same driving school practicing 3 point turns with the same student in the early evening on the street by the Temple - again I have to constantly go around them as they are not always careful.”

=====

“They are also "practicing" on Francis all the time and trying 3 point turns or parking right at the four way intersection of Beltran and Francis. Also - they purposefully practice parking and backing into spaces between residents cars on the street - before I put in my driveway if I saw them I would go stand at my car and tell them to move off! My parents taught us to drive and back up on little windy roads in a cemetery and we practiced parking between barrels - not other people's car that we could have damaged! They seem to be around ALOT more the past 6 months or so.”

=====

“The traffic here (and the aggressiveness, IMO) has gotten so much worse this last year or so. We've had our child in both of the schools at this intersection since 2013 and have perceived a huge shift lately. The confluence of cars driving to the two childcare centers at this intersection and the Beebe one block away (and I'm sure others trying to get to the charter and the high school) in the morning are

unreal. And then at night, when I'm walking from the train to pick my child up, drivers coming from downtown garages and the T parking lot get SO heated when they see how many parents and kids there are slowing things down over here because they want to use it as a cut through at rush hour, and I feel like I take my life in my hands trying to walk two blocks in an urban downtown where walkability should be paramount! Now obviously there are lots of Malden people doing this, but I see an awful lot of cars that continue up the Fellsway out of town after racing through this intersection, and that makes my blood boil. Half of them have NH plates!! There are three schools and two houses of worship in a one block radius with probably the poorest pedestrian infrastructure of any place I have ever lived, and requests to look into improving problems here seem to fall on deaf ears. I have been tweeting and see-click-fixing these problems for three years straight and it's always "there's no money/you're the only one complaining about this/blah blah blah." Thanks to Debbie for responding, I hope something comes of it. If we don't get smart about our traffic planning and take into account the increasing number of pedestrians and cyclists and people who would rather have their kids walk to school but drive out of (very real) safety concerns then we will always be a "car is king" city whose infrastructure supports out-of-towners cut-through commuting over its own residents."

=====

"I have lived in Malden for over 40 years. Clifton and Dexter back then was only a 2 way stop.

It took a young girl's life in a car accident and a off duty Malden police officer, whose car was hit and was overturned at that site. Thank God, his life was spared. Only then, they made that intersection a 4 way stop!

I just hope the city can come up with some safety plans. Also, we need more police presence when the children are going and coming home from school."

=====

"The more we share our legitimate concerns, the better. Maybe WE, the neighborhood, are the true and accurate "traffic study," and a free one at that! I emailed a number of contacts at the City of Malden, and I hope you and others will do so too. ... this is a convenient and easy way to communicate with those at the City. And, as you commented, one Counselor at Large, Debbie DeMaria, has already given us helpful input. And this morning I received an email from Counselor at Large Craig Spadafora - inviting me to give him a call so we can talk. So - perhaps there IS light at the end of this "dangerous traffic-situation" tunnel. BTW - just now I received the following email from Malden Police Chief Molis. NEXTDOOR NEIGHBORS - ANY THOUGHTS?"

=====

"there should also be a stop sign at the intersection of Dexter and Hawthorne Streets. Nearly every morning between 7 and 830 am when I am going to work, I find people speeding up Hawthorne. If I did not implement a process of self stopping on Dexter before turning left onto Hawthorne, I would have had many an accident, as people fly up Hawthorne (I assume cutting through to Glenwood). I hope these traffic safety issues get resolved before another person is hurt."

=====

“Ugh. This city is crawling with stop sign/stop light blowing #\$\$%&! ... Stay safe this holiday season guys!”

=====

“I live on Clifton near Greenleaf. I see people blow through that stop sign all the time as well as the one further down at Clifton and Linden. Cars travel at ridiculous speeds on Clifton and Glenwood, using them as a cut through between Highland/Fellsway and Washington/Main St.”

=====

“Washington Street between Oak Grove station and Clifton Street is a similar problem as are the streets parallel to Washington in the mornings particularly when people are using these streets to go to work. Many people drive far beyond the speed limit on these streets.”

=====

“I've worked with [city councillors] to try and address safety concerns about Glenwood Rd. I even took my concerns to the traffic commission. They agreed with me that safety is a problem, but no one was willing to actually do anything about it. I was told that any change would require a traffic study and there was no money in last year's budget to conduct the study. That's baffling to me considering the money being put into other things in our city. I'd love to be involved in any effort to make Glenwood and Clifton safer for everyone.”

=====

“I continue to have serious concerns about the safety of pedestrians in our neighborhood, especially along Glenwood and Clifton. I'm specifically concerned about the lack of safe pedestrian crossings on Glenwood Road.

Over the last few days there has been a conversation on NextDoor about an accident at Clifton and Dexter. The conversation has revealed that I'm one of many of your constituents who are concerned about traffic safety in our community. People have made great suggestions to add speed humps and raised crosswalks.

You live here, you must know this is a problem. I walk with my sons almost every day and almost every day I see people speeding, crossing the double yellow line, failing to stop at stop signs and crosswalks and generally disregarding the safety of others.

The demographics of this neighborhood are changing. There are many more small children living here than there were even a few years ago. With no bussing for Malden Public Schools most of those children will be walking to school on roads that the community seems to agree are unsafe. This is unacceptable.

I would love to work with you to improve this situation. This is my home, I love this neighborhood and I'm committed to making sure it's a safe place for all of us.”

=====

Citizen Ideas for Solutions

“Installing raised crosswalks or some other traffic calming device would help.”

=====

“I like the idea of a raised area at the intersection to slow traffic. Does anyone know what we can do to get that?”

=====

“we were just in Sedona, AZ for thanksgiving and spotted these recycled rubber speed humps (by the way, thank you for clarifying bumps vs humps....always wonders what that was all about). from a quick Google search. Pricing less than \$500. Thoughts?”

=====

“I agree that raised walks are a good idea. About 2 months ago at that intersection, I saw a young woman hit by a pickup truck that rolled through the stop sign as she was crossing the road. Thankfully, she was ok. The driver sped off while shouting at her to get out of the road...”

=====

“I lived in San Antonio for a number of years. Our good friends lived on a 'cut-through' street (a side street that folks used to avoid traffic/lights on a larger street.) The neighbors were fed up with the constant speeders and found out that they could self-fund speed 'humps' (not 'bumps' - 'humps are low and wide, if you drive faster than say, 25/30 you 'bottom out' your car. Speed 'humps' are high and narrow and force you to slow to about 5 mph.) The neighbors took up a collection and had about 5 humps put in all up/down the road. (one concern parent had one put smack dab in front of their house.) Granted, there were no issues of snow plowing in San Antonio, but a speed 'hump' MUST be cheaper than an entirely raised intersection?”

=====

“When this corner was a school bus stop, I called the traffic department multiple times asking for police presence there occasionally to enforce the stop signs, but I never saw an officer there, ever. I also raised this intersection at a mayor's safety meeting at Beebe earlier this year, and still nothing has been done. A raised crosswalk, speed bumps, or something is needed so that cars will be more likely to stop at these stop signs. It's really awful.”

=====

“I support mandatory drivers re-education for all. No one seems to take driving seriously as they believe it's their right. Need to be reminded it's really a privilege.”

=====

“Good idea, write tickets to pay for traffic study. ... I would bet 90% of those cited would fight the ticket.
...
I would however be pleasantly surprised to see a cop occasionally enforcing the 4 way at maple and Dexter during school arrival and dismissal times.”

=====
“Monitor traffic flow for observation period using mobile Malden security camera. Observe traffic patterns (running stop signs is a frequent occurrence and should be readily visible. Based on observation, plan actions”
=====

“This could be a potential project for Complete Streets? You could ask the Mayor where his office stands on accepting or denying that funding proposal. Medford has had luck with the program ...”

Comments / Document assembled by Brian DeLacey

For

***Dexter St @ Clifton St Debbie DeMaria, Coun-at-lge
Safety Concerns***

***Requests the Traffic Commission discuss safety issues at the intersection
of Dexter St and Clifton St.***

12/20/2016

<http://www.cityofmalden.org/sites/default/files/1216agenda.pdf>

***Minutes will be posted at
<http://www.cityofmalden.org/board-commission/traffic-commission>***